

FULL SPEED *ahead*

▶ NEW FERRIES ON THE HORIZON



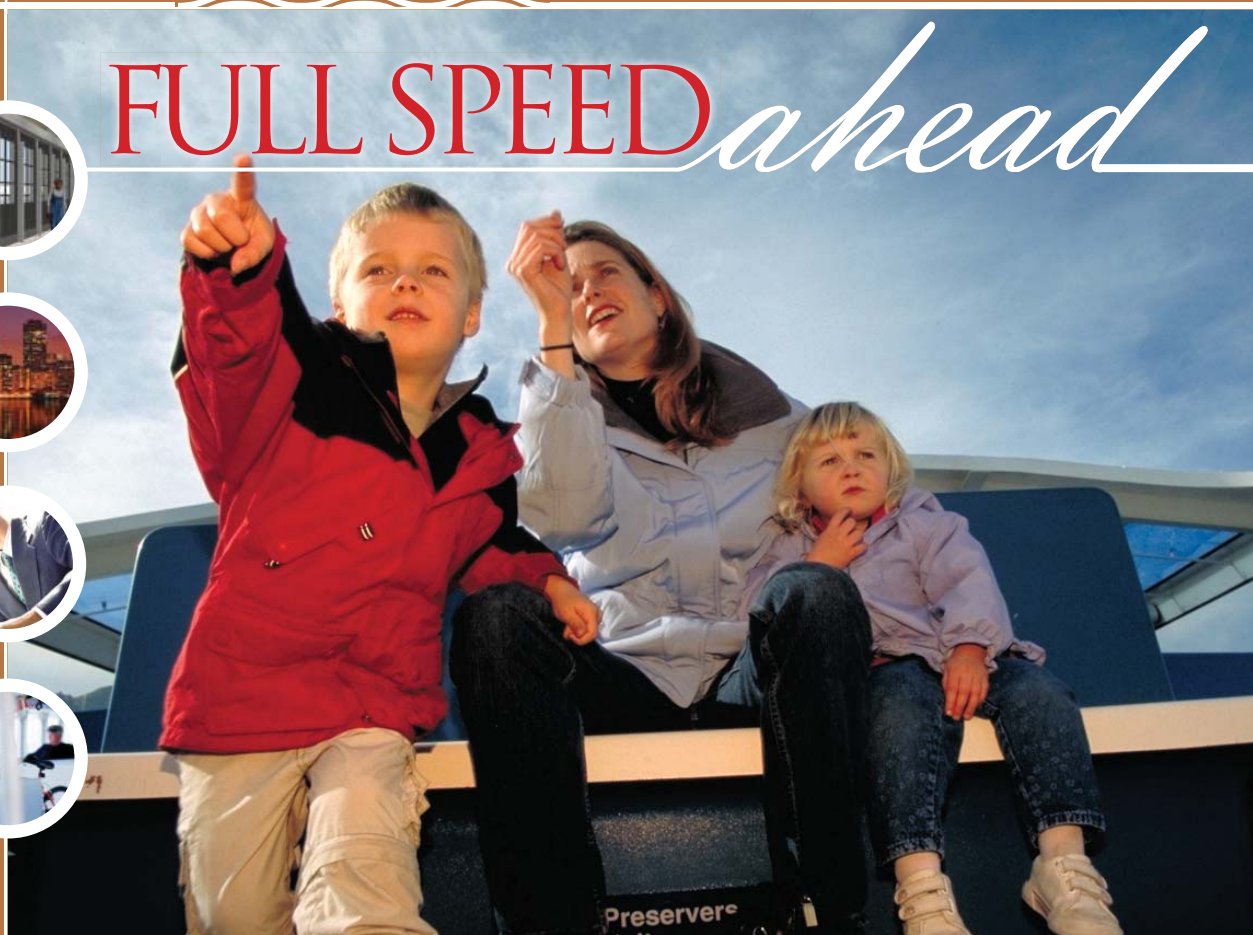
▶ EMERGENCY RESPONSE/ DISASTER RELIEF PLANNING



▶ PLANNING FOR CONTRA COSTA COUNTY FERRY SERVICE



▶ FUN FERRY ACTIVITIES



NEW WTA FERRIES ON THE HORIZON FINALIZING NEGOTIATIONS ON START OF CONSTRUCTION



RENDERING OF WTA'S NEW FERRY

On April 27, 2006, the WTA authorized staff to begin negotiations with the boat building team of Nichols Brothers Boat Builders and Kvichak Marine Industries to build the first two WTA boats. Engineering Manager, Mary Frances Culnane is putting the finishing touches on these negotiations so that boat construction can start this fall. These boats would initially

set sail on the Oyster Point/South San Francisco-Oakland route, scheduled to start in 2008. Mary has spent many months working extremely hard to make sure the ferries are built to the highest level of reliability, passenger comfort, and safety in an environmentally responsible fashion.

Environmentally, the ferries will be ten times cleaner than existing ferries and 85% better than the EPA's emission standards for 2007 marine engines. Innovative measures incorporated to protect the bay and marine life include low-wake, low-wash hulls, and a whale detection system with Farsounder forward searching sonar. There are 34 spaces for bicycles with fresh water rinse available to wash off salt water spray.

Also much thought has gone into the comfort of the passengers. There will be 149 extra

wide 23" interior seats and 50 exterior seats. A lounge area and bar stools are for the more social customers. Other areas of the ferry are conducive to customers who like to do some work or those who just want to kick back and take in the scenery. The color scheme of the furniture is inviting and tastefully designed.

"Environmentally, the ferries will be ten times cleaner than existing ferries and 85% better than the EPA's emission standards for 2007 marine engines."

WTA is very proud of their new ferries and will report in the next "Full Speed Ahead" on the first day of construction and estimated completion date.

A CALL TO ACTION FOR EMERGENCY RESPONSE/DISASTER RELIEF

By Charlene Haught Johnson



The 1989 Loma Prieta Earthquake and the 2006 Category 5 Hurricane Katrina in New Orleans are chilling reminders of the damage to critical transportation links that

can happen in a matter of moments. Ferries will be essential to help the area get back on its feet, keep the economy moving, and ensure the free flow of people, goods and services in the immediate aftermath of a disaster through the recovery period.

Earlier this year, the Bay Area Council called for an expanded role for ferries in emergency response. The WTA is responding in three ways to improve emergency response capabilities. The first is preparation of a Regional Maritime Contingency Plan which includes procedures

for disaster response. The second is improved coordination between the many water and land transit providers. Finally, expanded ferry infrastructure is needed to provide the capacity to effectively respond.

For the Bay Area disaster relief to be successful, vessels must be quickly deployed where most needed, and the response needs to be coordinated with land transit providers to get evacuees to/from the shoreline.

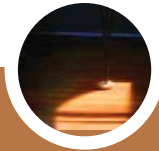
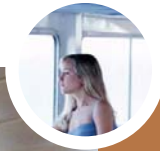
Our Regional Ferry Plan focuses on development of eight new ferry routes, in addition to the six existing routes. WTA's Plan also calls for expanding the existing ferry system from 15 boats and 9 terminals to 43 boats and 19 terminals. Build out of the Regional Ferry Plan would provide 10 times the evacuation capacity provided during Loma Prieta, without the need to build facilities that will be just sitting around until an emer-

gency happens. Build out will cost approximately \$600 million, and it is one of the best ways to move people in the aftermath of a disaster.

We are looking towards the upcoming November Infrastructure Bond as a source of funding that could be used to develop disaster response transportation systems that could move people, goods, emergency personnel and equipment in the aftermath of a disaster .

Based on the result of a recent poll sponsored by the WTA, Bay area residents support the role of ferries for disaster response. New ferry service is supported by 81% of bay area voters, and 75% of those polled are more likely to support the November Infrastructure Bond if it includes funding for emergency response.

Charlene Haught Johnson is President of the WTA Board of Directors.



NEW BEAT *on the Bay*

Alameda/Oakland Ferry joins Golden Gate Sausalito Ferry on popular Lunch for the Office Bunch events — For the second year in a row, WTA has sponsored Lunch for the Office Bunch events for the Golden Gate Sausalito Ferry and this year added to the mix the Alameda/Oakland Ferry.

Steve Castleberry, CEO of WTA commented that "this is a great way to get people to try the ferries and realize how easy it is to get around on a gridlock-free Bay, instead of driving everywhere. Plus, this is a great start to the weekend."

The Alameda/Oakland Ferry attracted nearly 100 new riders to this event on Friday, August 25. This was an impressive increase in ridership for a first time Lunch Bunch event to the East Bay.

If you've never been on a Lunch Bunch cruise across the bay (it takes just over an hour), the last event is Friday, October 6 aboard the Golden Gate Sausalito Ferry departing promptly at 11:35 a.m., from behind the Ferry Building, returning to San Francisco at 12:45 p.m. So, grab the gang, pack a lunch, or snack from the onboard bar and start the weekend on a fun note. Bay area favorite Jules Broussard, saxophone extraordinaire, ends the Lunch Bunch on a high note! For more information, go to www.goldengate.org.



FERRIES NOT JUST FOR COMMUTER

TIPS FOR FUN ACTIVITIES BY FERRY



The Bay Area is a plethora of fun for active and not so active folks and taking the ferry adds to the adventure of discovering this beautiful place we live.

If you're a biker, bring your bike on the ferry and discover a variety of bike trails in the

north or east bay. Don't own a bike? You can rent bikes at Fisherman's Wharf (Bay City Bikes and Blazing Saddles) and tour around the city, or bike across the Golden Gate Bridge to Sausalito and take the ferry back to the city. For more adventures, why not go kayaking? You can rent kayaks from Sea Trek Ocean Kayaking Center in Sausalito – 415-332-8494. If that's a bit too strenuous, shopping and good restaurants are on the doorstep of most ferry terminals.

Don't forget, most ferry agencies offer special discounts for senior, person's with disabilities and families. Go to www.watertransit.org to link to ferry services in the Bay Area.



SNEAK PEEK INSIDE THE NEXT ISSUE

- ▶ THE WTA IS BUILDING BOATS!
- ▶ OCT. 7 FERRY DEMONSTRATION RIDE FROM REDWOOD CITY
- ▶ PLANNING FOR BERKELEY/ALBANY SERVICE MOVES AHEAD

San Francisco Bay Area Water Transit Authority
120 Broadway San Francisco CA 94111
Phone: 415.291.3377 Fax: 415.291.3388
www.watertransit.org

BOARD OF DIRECTORS

President

Charlene Haught Johnson

Vice President

Captain Nancy Wagner

Hon. Albert Boro

Hon. James Fang

Hon. Anthony J. Intintoli, Jr.

Hon. Beverly Johnson

Hon. Gavin Newsom

Dr. Rocco L. Mancinelli

Ezra Rapport

Marina V. Secchitano

Anthony Withington

Chief Executive Officer

Steven Castleberry